

Storage

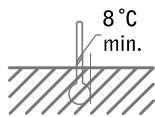
nemamax® should be used as soon as possible upon delivery. The product may be stored at 4 to 8°C until the expiration date on the package. Do not freeze or expose to temperatures higher than 35°C.

Application conditions

Apply nemamax® from February to May and from September to October. This is when weevil larvae or pupae are present. The soil surface should be moist and remain moist for two weeks.

Avoid application in direct sunlight. Apply in the evening, when overcast or during rainfall. The soil/cultivation media temperature must be above 8°C for at least several hours per day.

Irrigate within 30 minutes after application to wash the nematodes into the soil. When applying via drip irrigation, rinse with water before and after.

**Application**

Dissolve the package contents in a bucket of 10 litres of water. Rinse the package to flush any nematodes still clinging to it. Stir the solution until all lumps have dissolved. Repeat stirring every 15 minutes.

Dosages*

Open field: 250,000 nematodes per m²

Pots, container, bags: 5,000 nematodes per litre of substrate

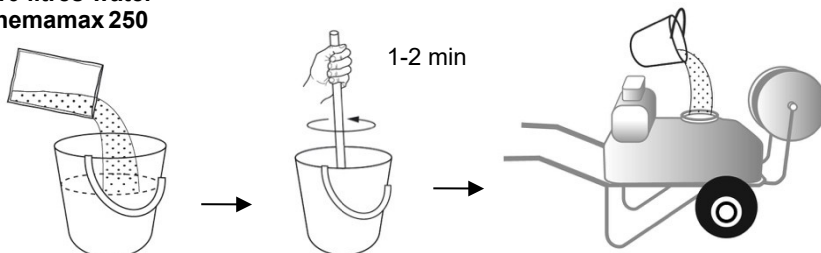
Strawberries: 15,000 nematodes/plant, blueberries: 35,000 nematodes/plant

Package size	Makes a maximum of	Treats	
50 million	100 litres nematode suspension	200 m ²	10 m ³
250 million	500 litres nematode suspension	1,000 m ²	50 m ³

* When used against chafer grubs, double the nematode rate.

Remove all filters and sieves and use nozzles with a diameter of at least 0.8 mm. The water pressure should not exceed 20 bar. Stir well during application to prevent the nematodes from settling.

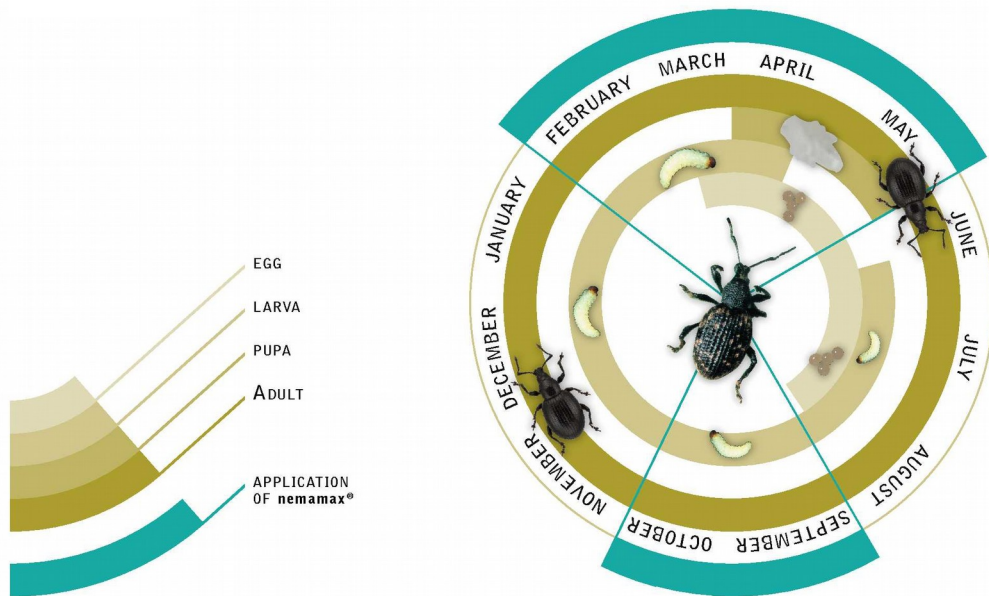
10 litres water +
nemamax 250

**Any questions?**

Ask your supplier or see our FAQ page at: www.e-nema.de

Black vine weevil life cycle

Control periods highlighted



nemamax® is effective against larvae and pupae, but not against beetles. The first larvae die after about one week. The pest control method becomes increasingly effective as the nematodes multiply inside the insects and infest the remaining larvae. Through this, nemamax® demonstrates long-term effectiveness.